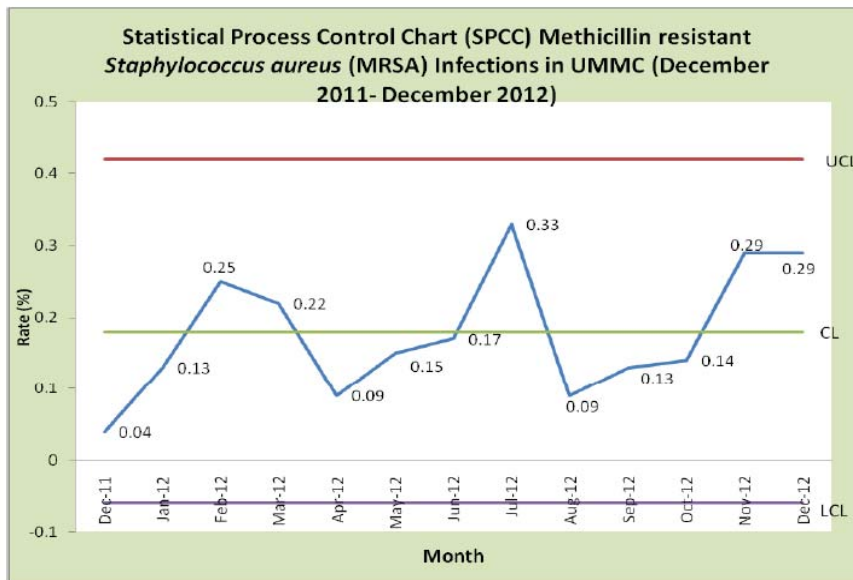
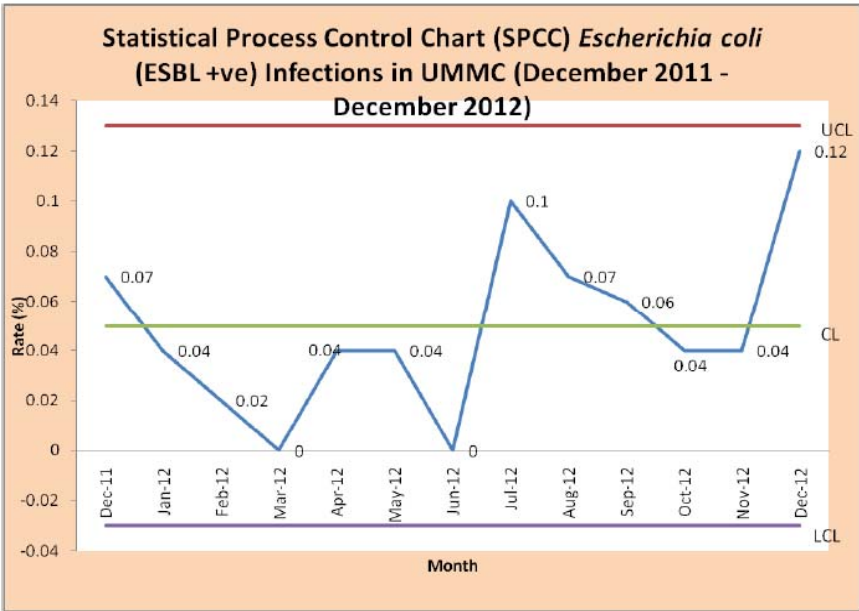
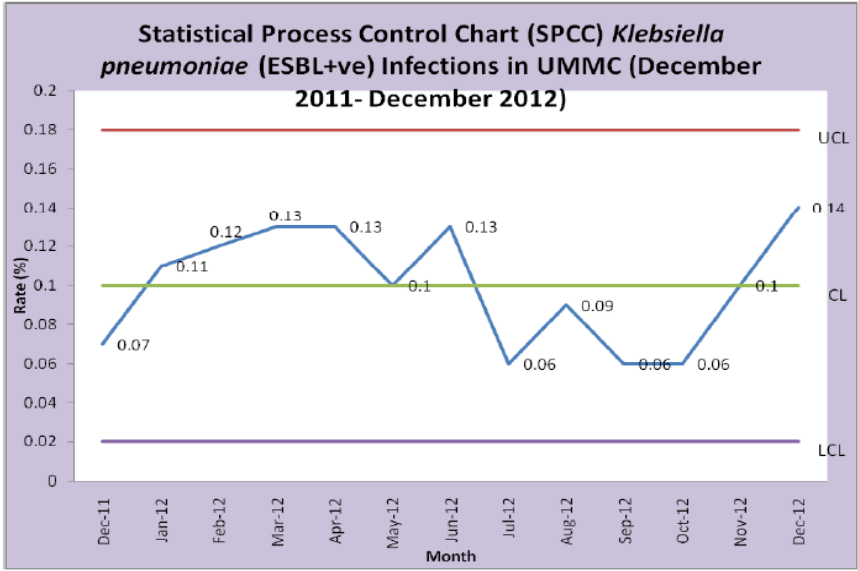


# INFECTION CONTROL STATISTIC

Year 2011, 2012 & 2013 (January- February)

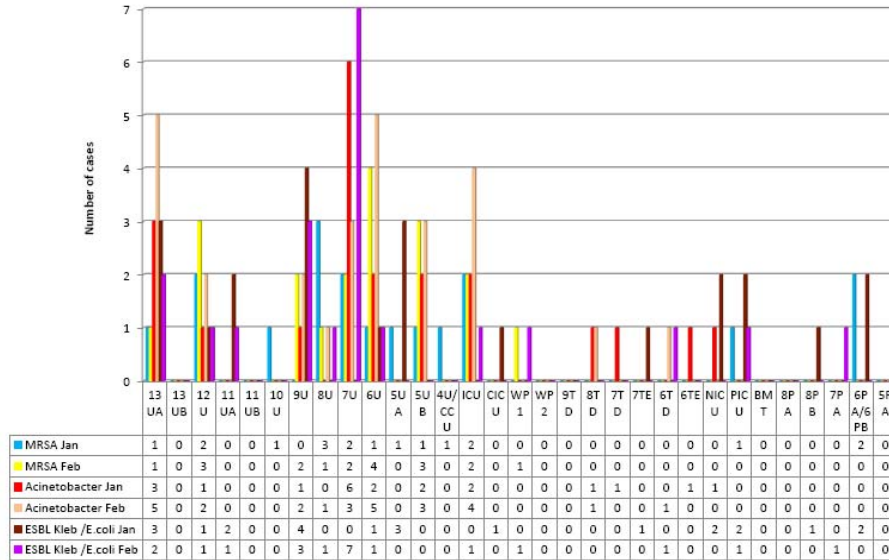
**MRSA, KLEBSIELLA PNEUMONIAE (ESBL +VE) AND  
ESCHERICHIA COLI (ESBL +VE)**





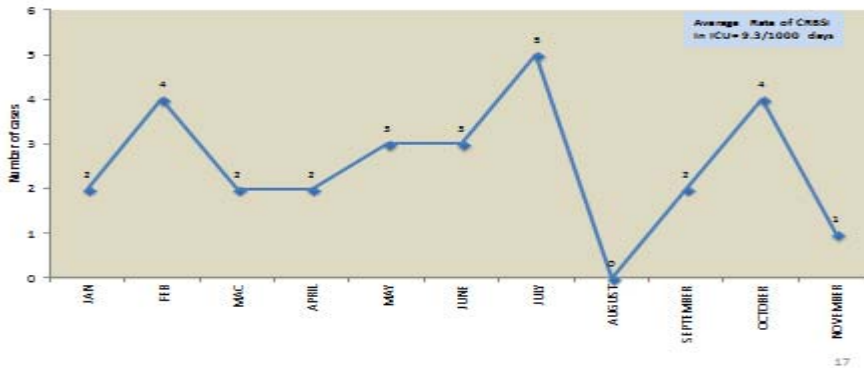
# MULTIDRUG RESISTANCE ORGANISM (MDRO)

Multidrug Resistant Organism(MDRO)  
Jan-Feb 2013

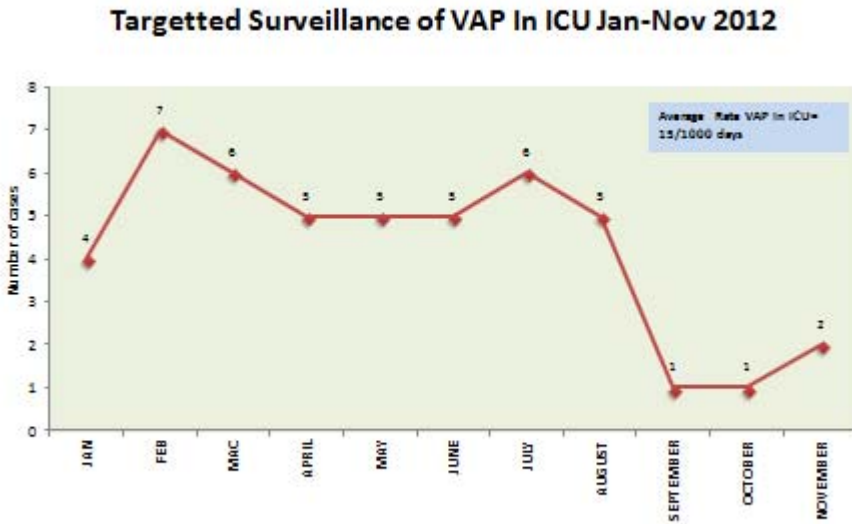


# CRBSI

Targetted Surveillance of CRBSI In ICU Jan-Nov 2012

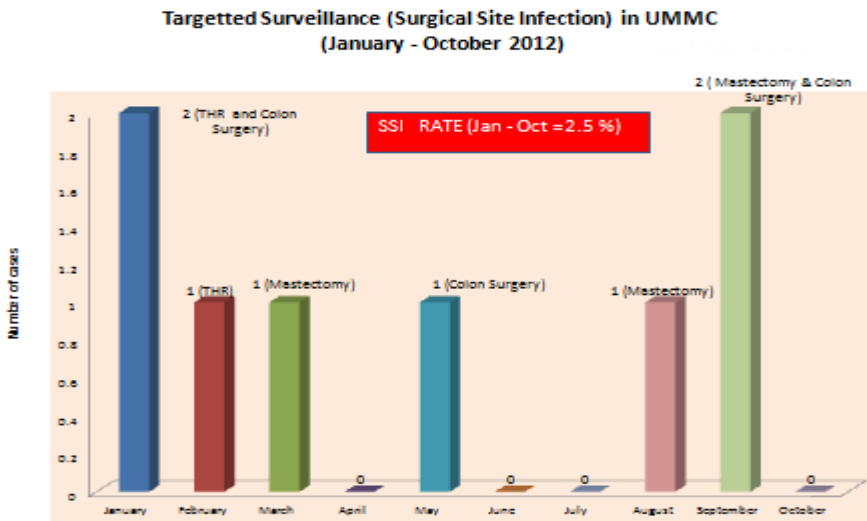


# VENTILATOR-ASSOCIATED PNEUMONIA (VAP)



18

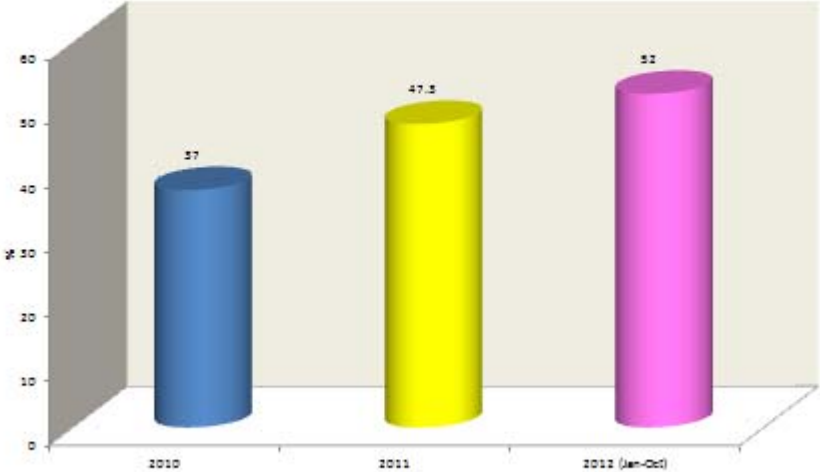
# SURGICAL SITE INFECTION



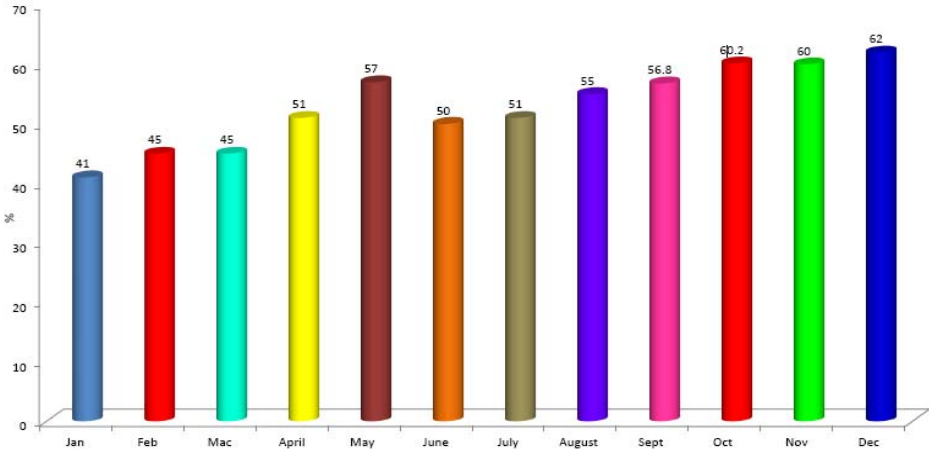
19

# HAND HYGIENE COMPLIANCE

### Hand Hygiene Compliance 2010-2012

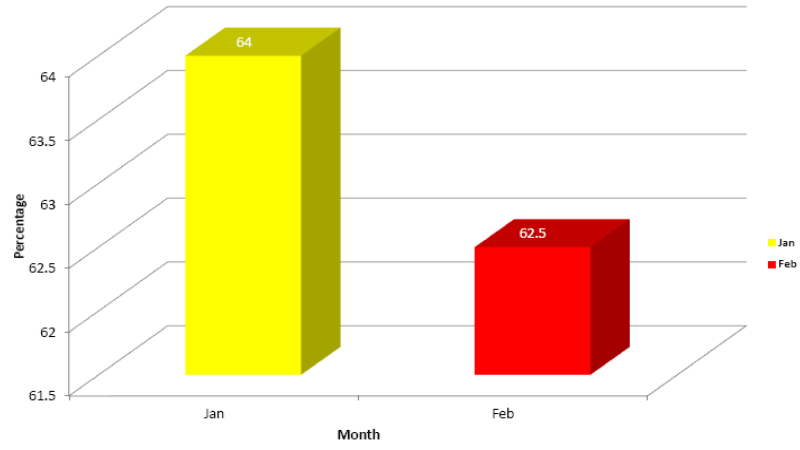


### Hand Hygiene Compliance Jan-Dec 2012

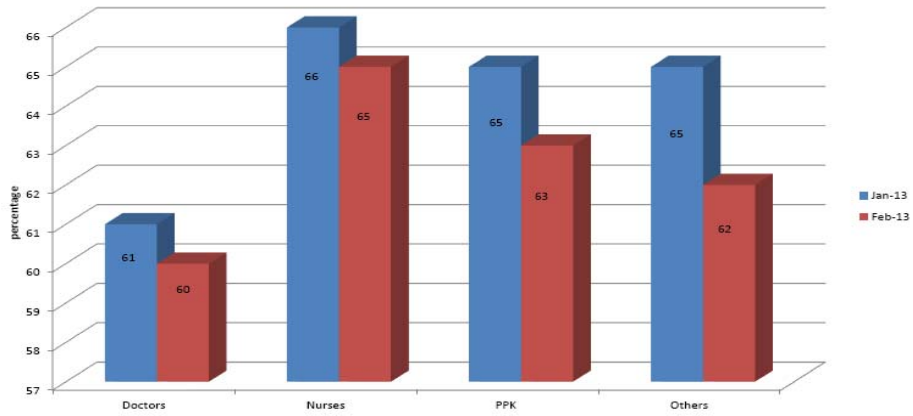




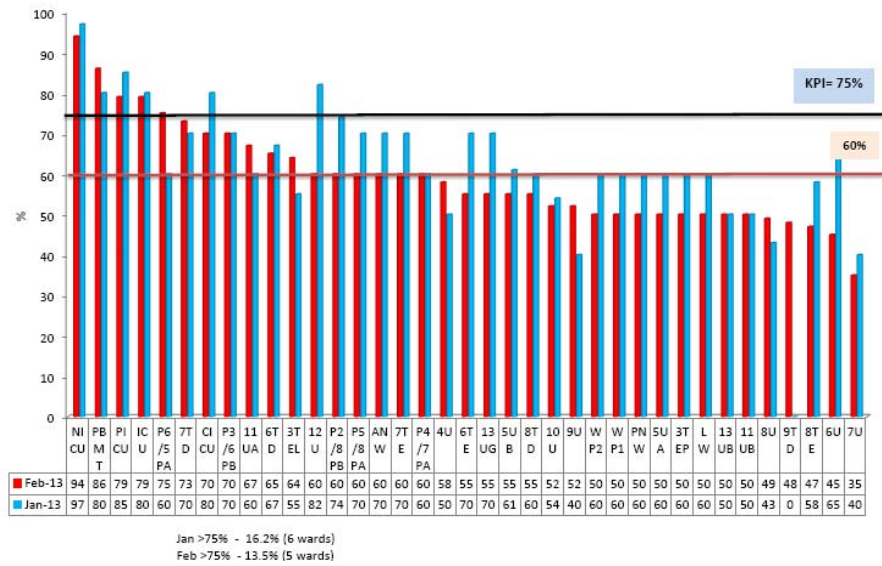
**Hand Hygiene Compliance  
January and February 2013**



**Hand Hygiene Compliance By Category  
Jan- Feb 2013**

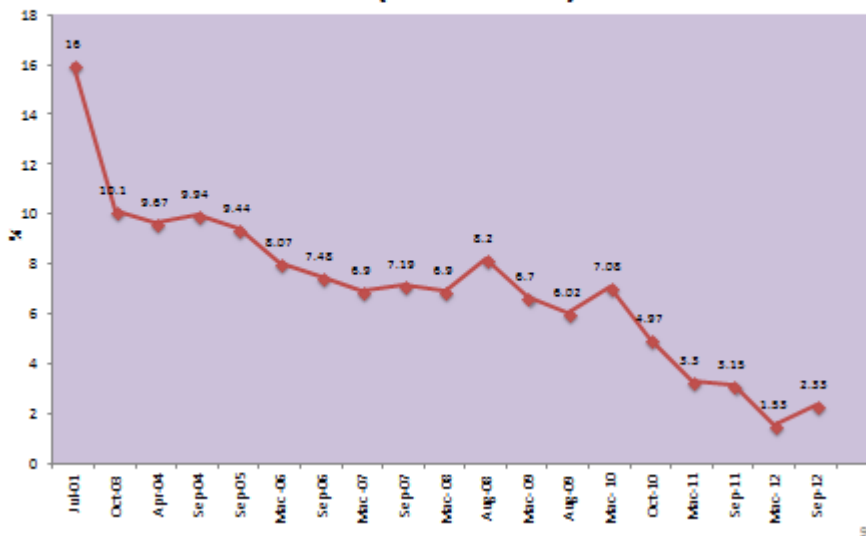


### Hand Hygiene Compliance Jan - Feb 2013



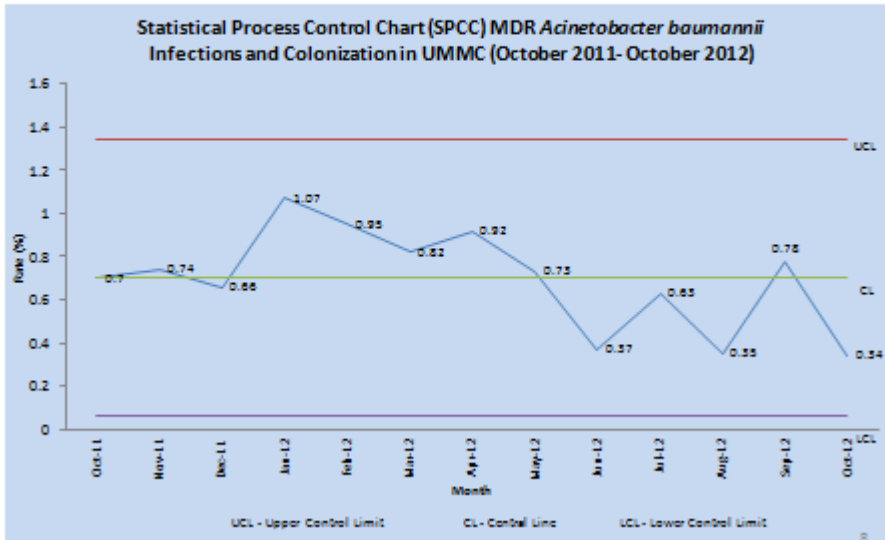
## HEALTHCARE ASSOCIATED INFECTIONS (HCAI)

### Trending of HCAI Rate (2001-2012)



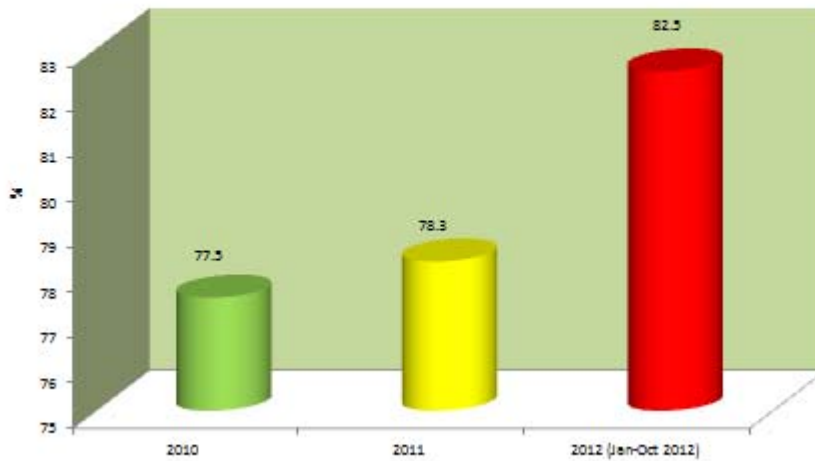


## Surveillance of Healthcare Associated Infections (HCIs)



## ENVIRONMENT AUDIT

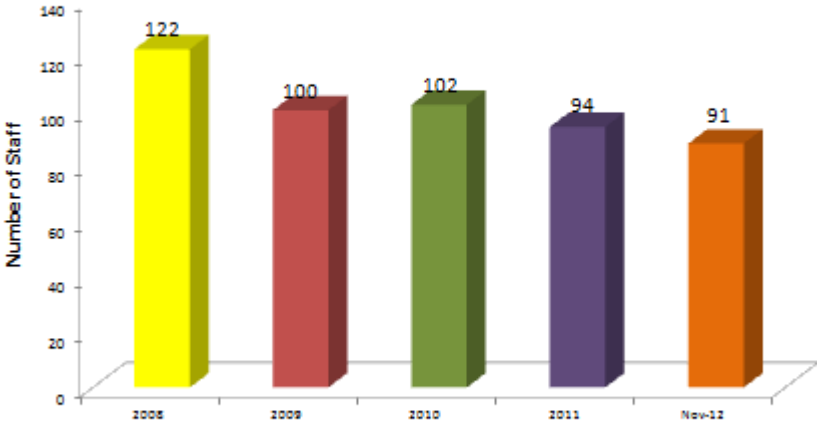
### Environment Audit 2010-2012





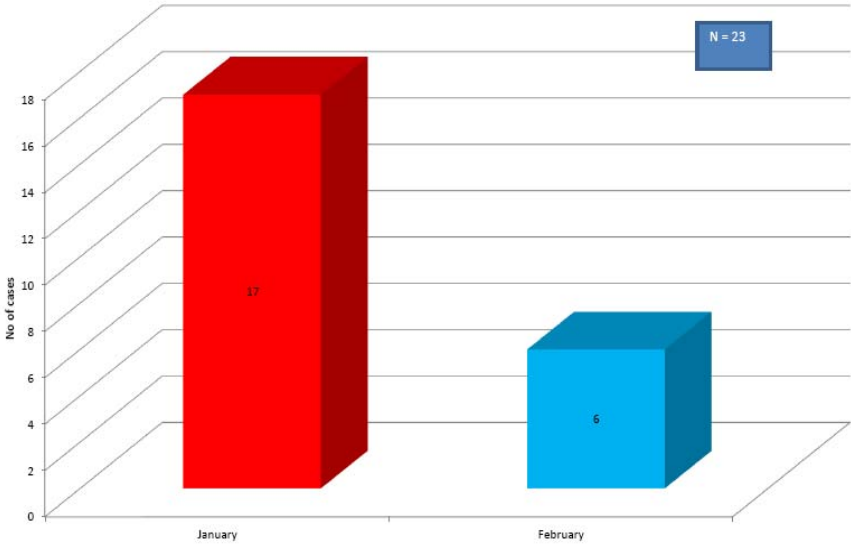
# NEEDLE STICK AND SHARP INJURIES

### Incidence of Needle Stick and Sharps Injuries



15

### Sharps and needlestick injuries in UMMC January - February 2013



# TUBERCULOSIS CASES

Number of Tuberculosis Cases Among HCW  
2008-2012

